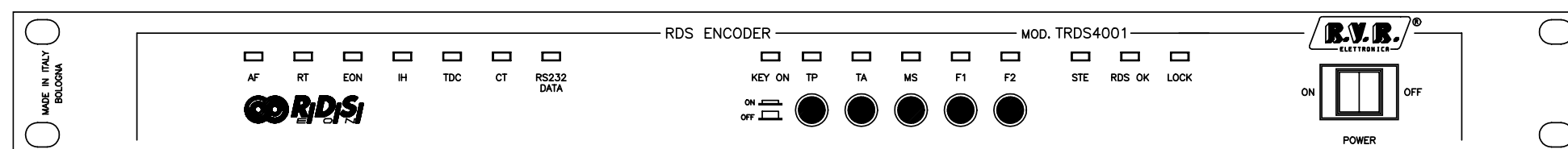


---

---

# TRDS4001



## User Manual

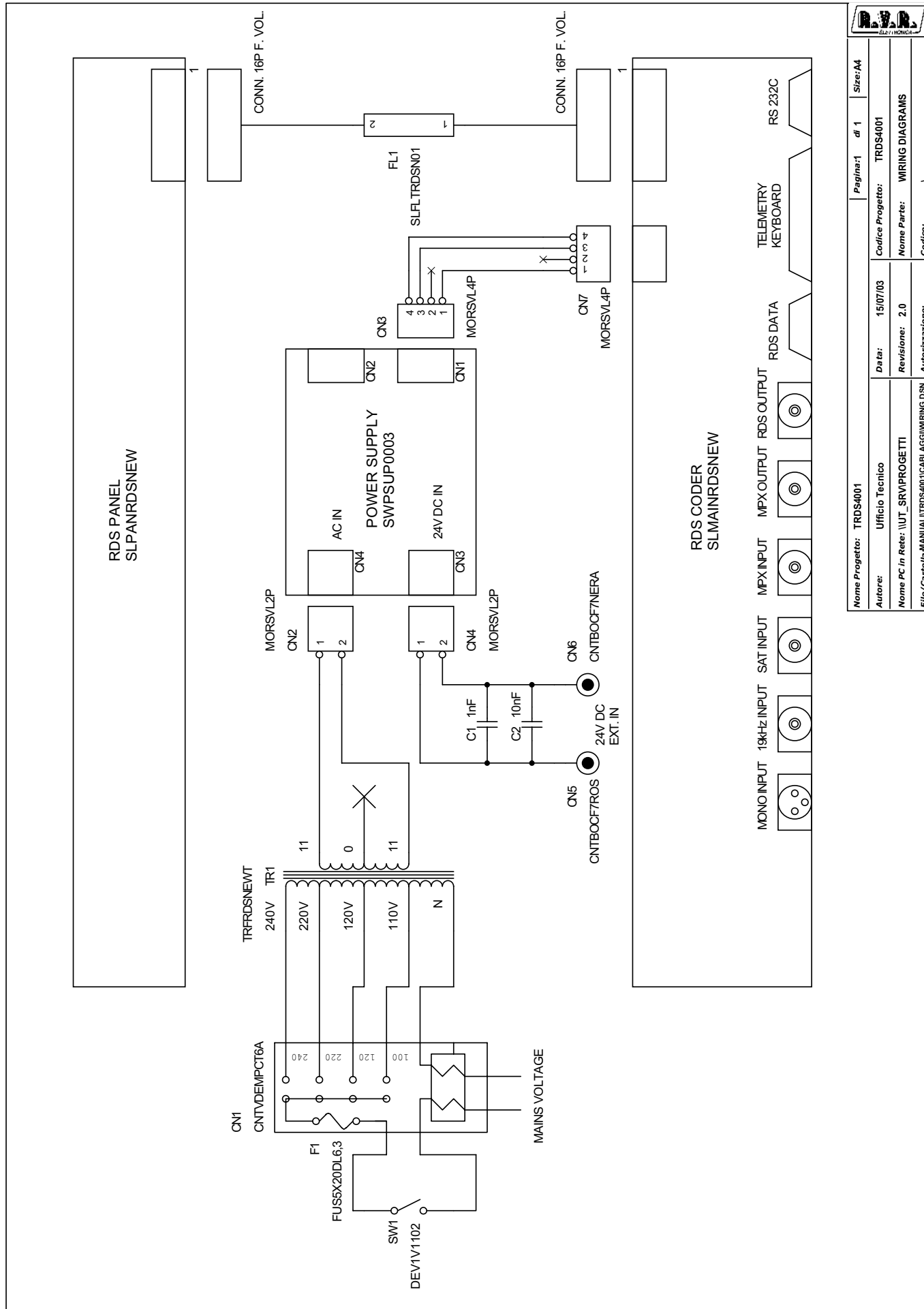
### Volume 2: Technical Appendix

## Appendix A Piani di montaggio, schemi elettrici, liste componenti / *Component layouts, schematics, bills of material*

Questa parte del manuale contiene i dettagli tecnici riguardanti la costruzione delle singole schede componenti il TRDS4001. L'appendice è composta dalle seguenti sezioni:

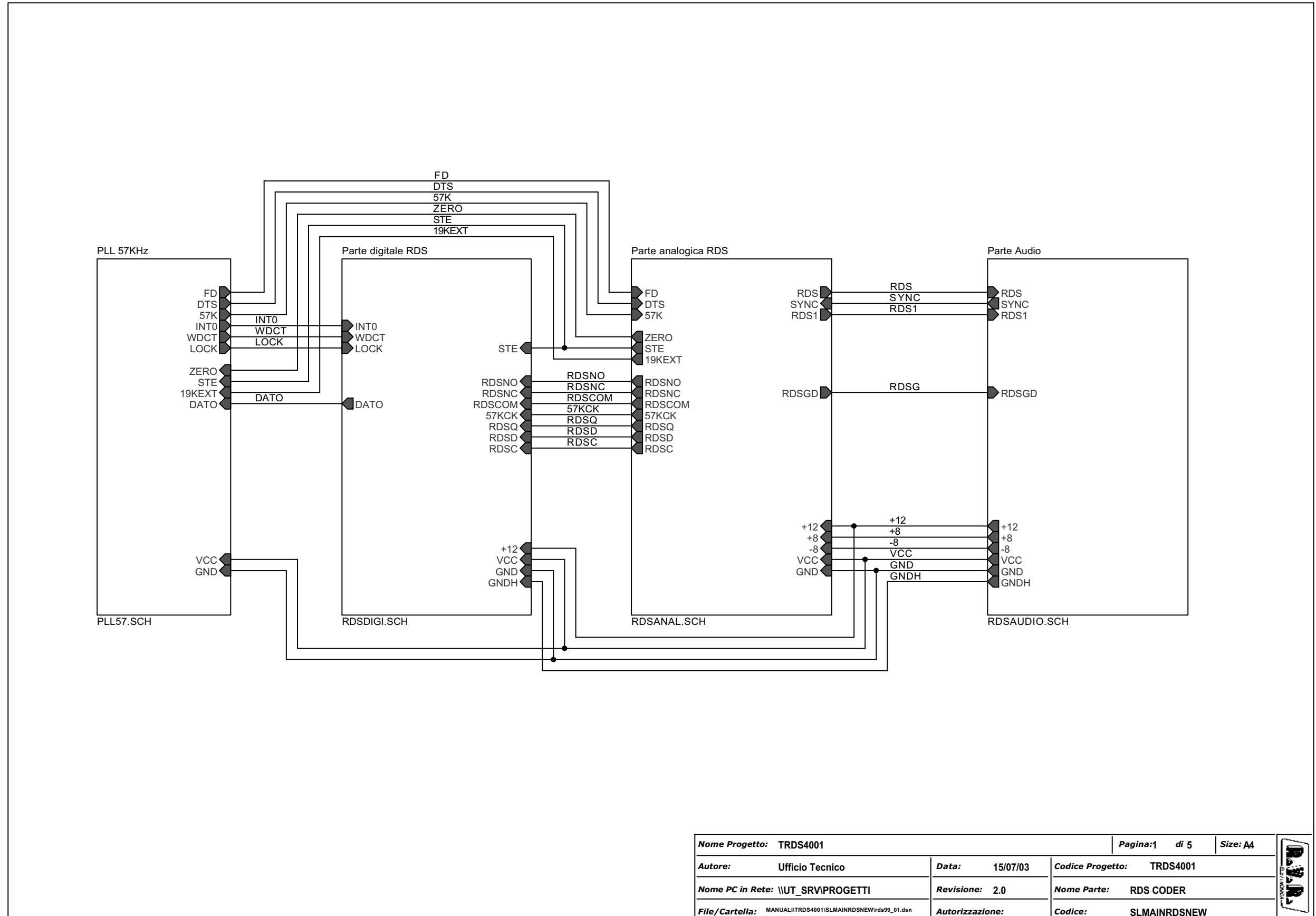
*This part of the manual contains the technical details about the different boards of the TRDS4001. This appendix is composed of the following sections:*

Description	RVR Code	Vers.	Page
Wiring Diagrams		2.0	1
RDS Coder	SLMAINRDSNEW	2.0	2
RDS Panel	SLPANRDSNEW	2.0	10
Power Supply	SWPSUP0003	2.0	13

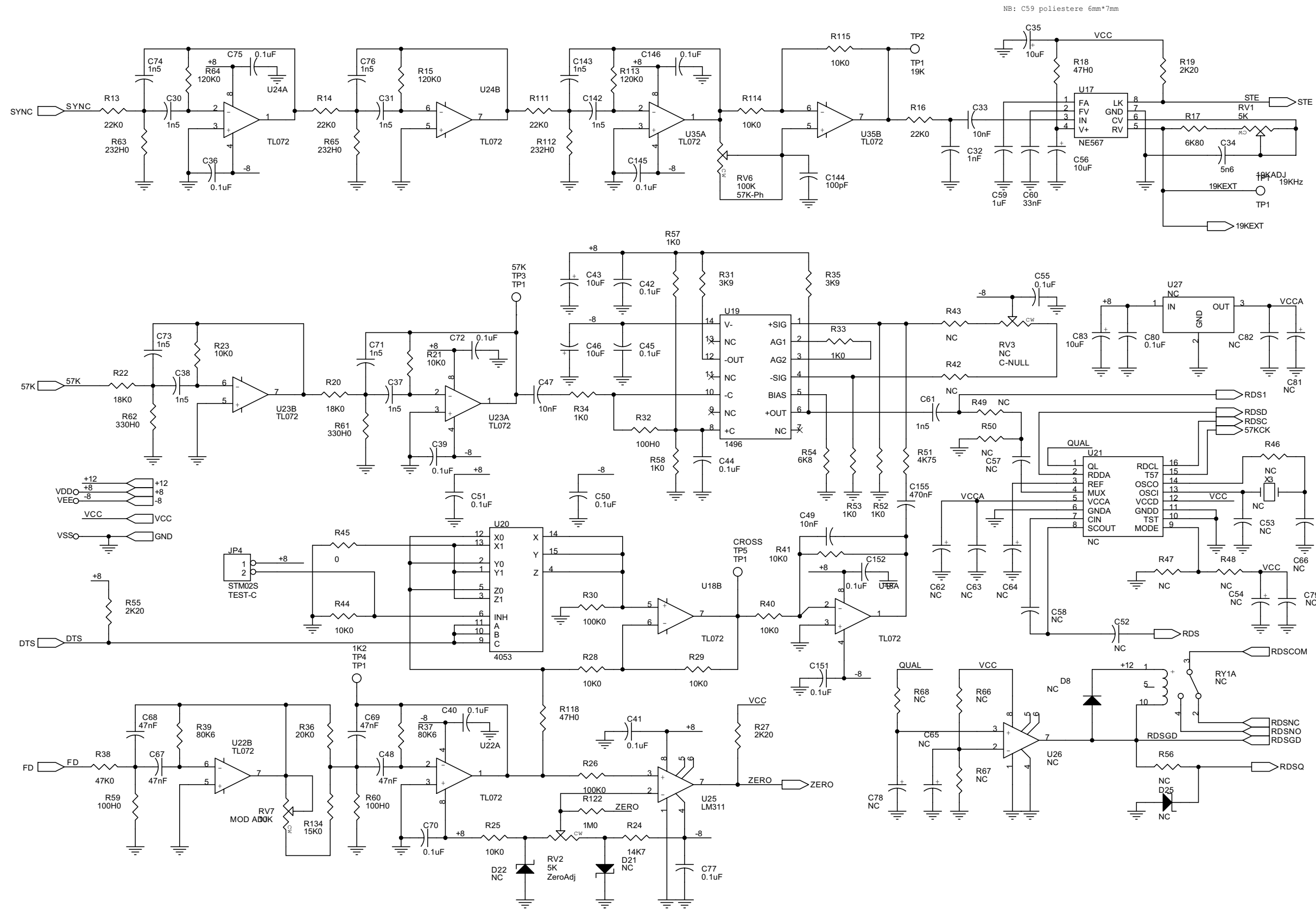


Wiring Diagrams - Bill of Materials

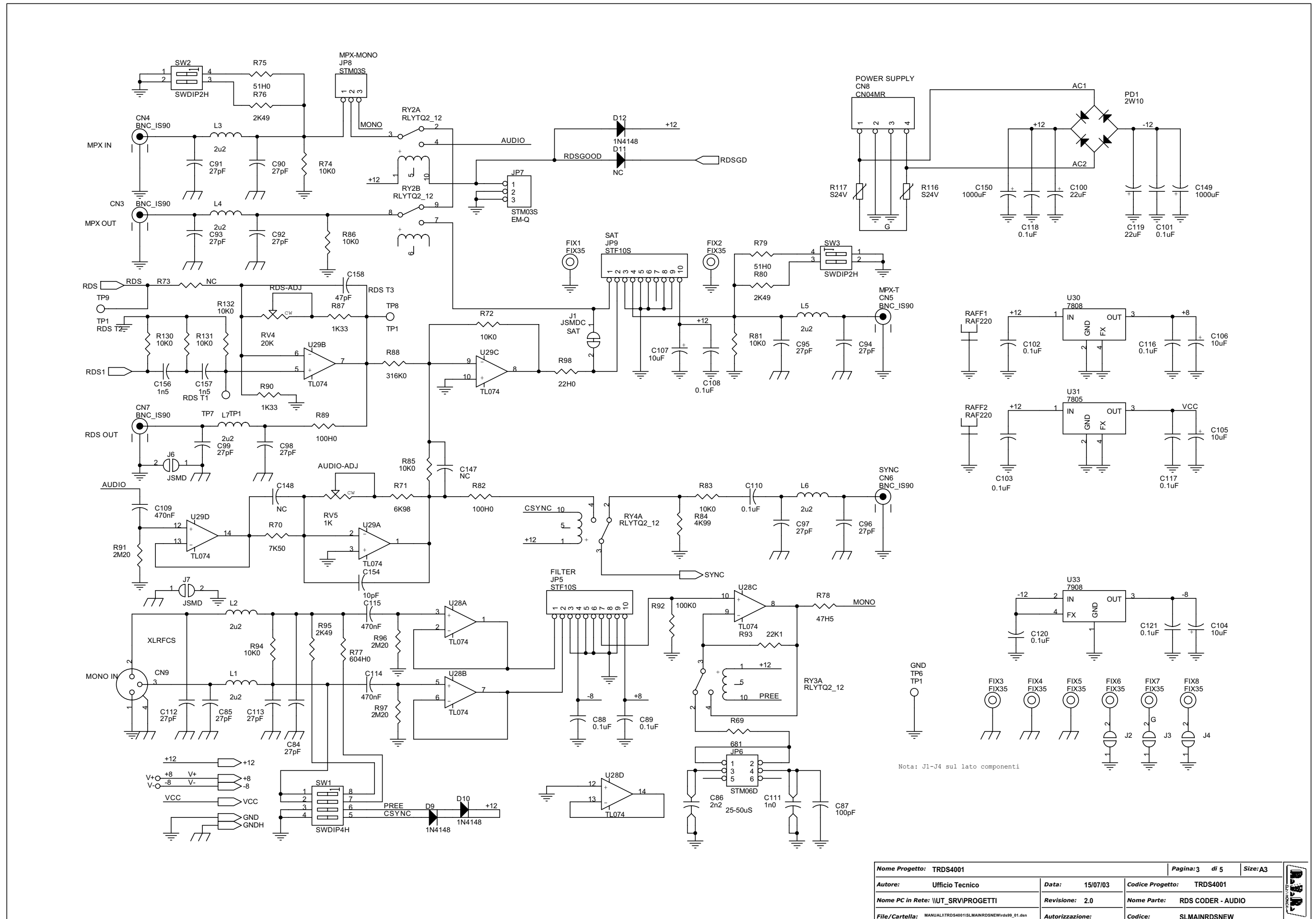
Item	Quantity	Reference	Part
1	1	CN1	CNTVDEMPCT6A
2	2	CN2, CN4	MORSVL2P
3	2	CN7, CN3	MORSVL4P
4	1	CN5	CNTBOCF7ROS
5	1	CN6	CNTBOCF7NERA
6	1	C1	1nF
7	1	C2	10nF
8	1	FL1	SLFLTRDSN01
9	1	F1	FUS5X20DL6,3
10	1	SW1	DEV1V1102
11	1	TR1	TRFRDSNEWT



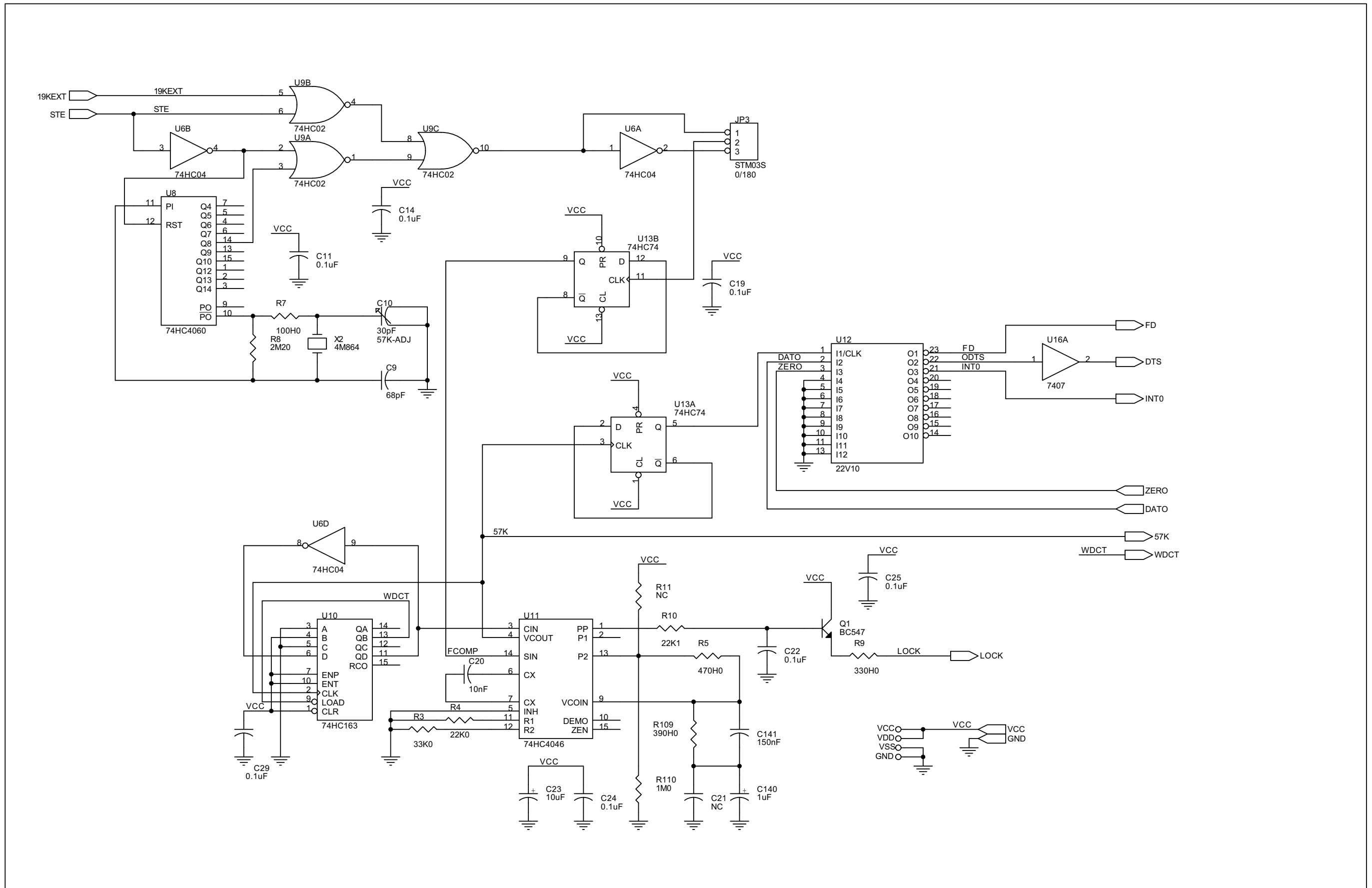
<b>Nome Progetto:</b> TRDS4001		<b>Pagina:</b> 1	<b>di</b> 5	<b>Size:</b> A4
<b>Autore:</b> Ufficio Tecnico	<b>Data:</b> 15/07/03	<b>Codice Progetto:</b> TRDS4001		
<b>Nome PC in Rete:</b> \\\UT_SRV\PROGETTI	<b>Revisione:</b> 2.0	<b>Nome Parte:</b> RDS CODER		
<b>File/Cartella:</b> MANUAL\TRDS4001\SLMAINRDSNEW\rds99_01.dsn	<b>Autorizzazione:</b>	<b>Codice:</b> SLMAINRDSNEW		



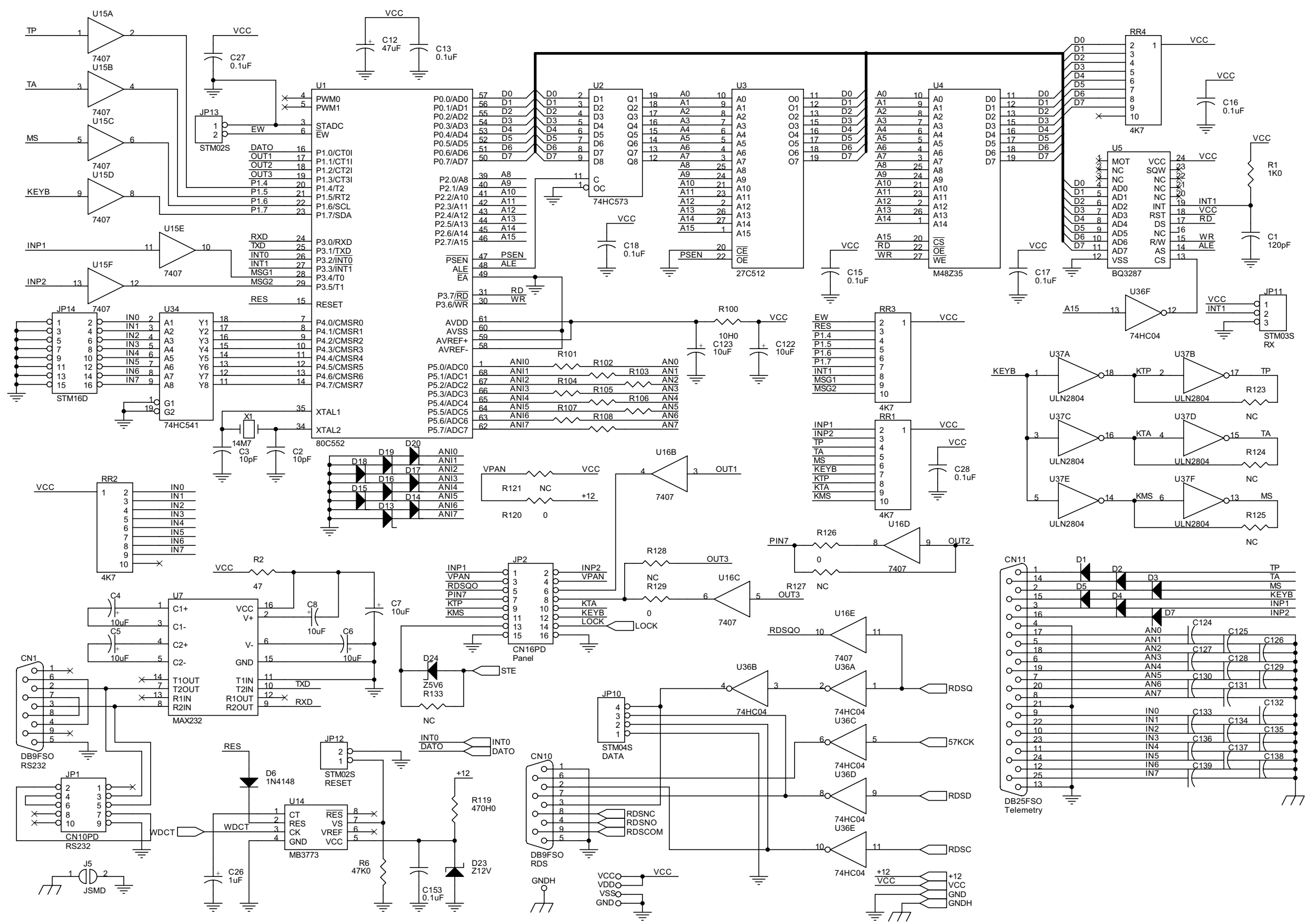
Nome Progetto: TRDS4001		Pagina: 2 di 5		Size: A3
Autore: Ufficio Tecnico	Data: 15/07/03	Codice Progetto: TRDS4001		
Nome PC in Rete: \UT_SRV\PROGETTI	Revisione: 2.0	Nome Parte: RDS CODER - ANALOGIC		
File/Cartella: MANUAL\TRDS4001\SLMAINRDSNEW\ds9_01.dsn	Autorizzazione:	Codice: SLMAINRDSNEW		



Nome Progetto: TRDS4001		Pagina: 3 di 5		Size: A3
Autore: Ufficio Tecnico	Data: 15/07/03	Codice Progetto: TRDS4001		
Nome PC in Rete: \\UT_SRV\PROGETTI	Revisione: 2.0	Nome Parte: RDS CODER - AUDIO		
File/Cartella: MANUAL\TRDS4001\SLMAINRDSNEW\rd9_01.dsn	Autorizzazione:	Codice: SLMAINRDSNEW		

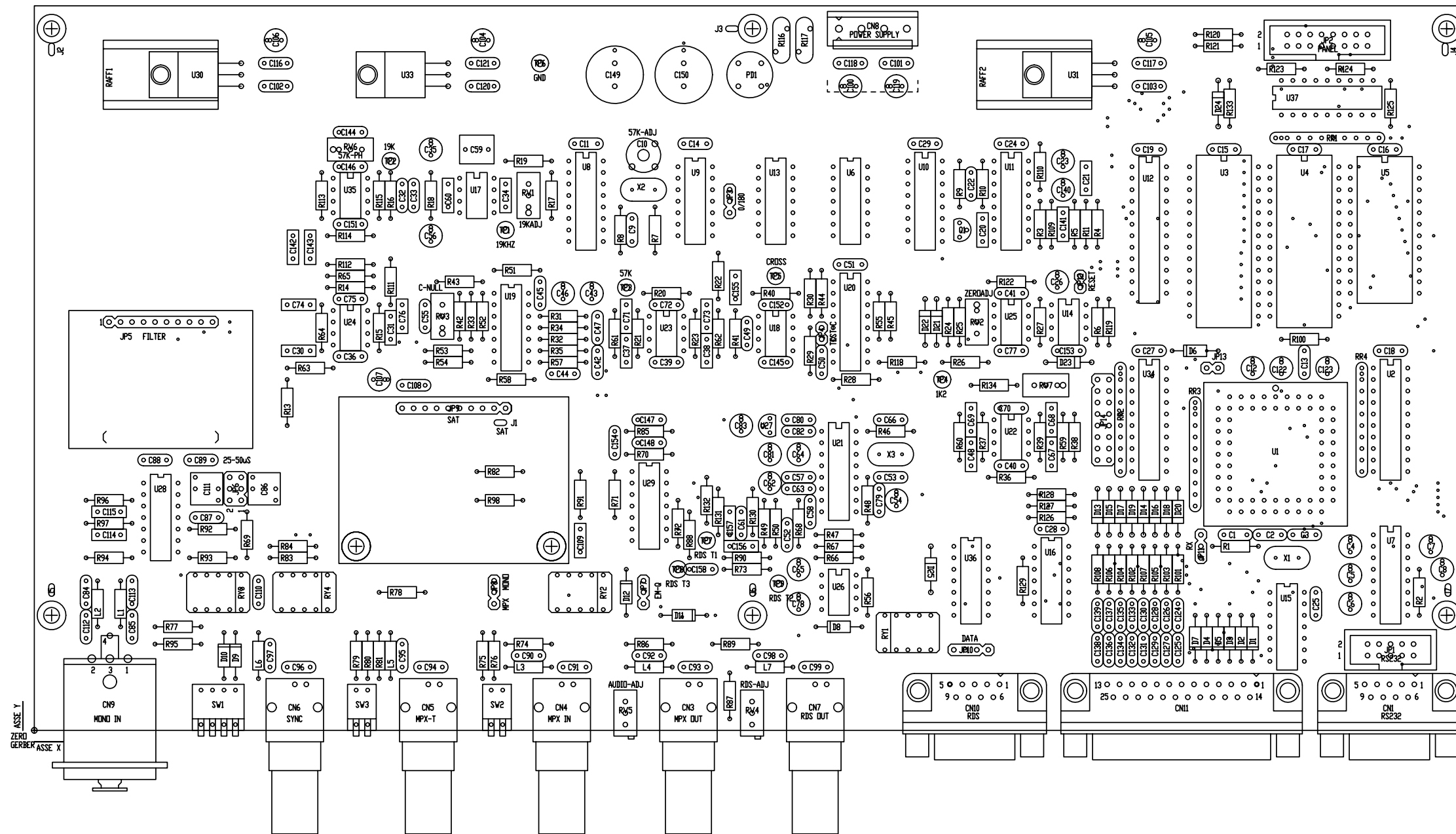


Nome Progetto: TRDS4001		Pagina: 4 di 5		Size: CUSTOM	
Autore: Ufficio Tecnico	Data: 15/07/03	Codice Progetto: TRDS4001			
Nome PC in Rete: \\UT_SRV\PROGETTI		Revisione: 2.0	Nome Parte: RDS CODER - PLL		
File/Cartella: MANUAL\TRDS4001\SLMAINRDSNEW\Trds99_01.dsn		Autorizzazione:	Codice: SLMAINRDSNEW		



Nome Progetto: TRDS4001		Pagina: 5 di 5		Size: A3
Autore: Ufficio Tecnico	Data: 15/07/03	Codice Progetto: TRDS4001		
Nome PC in Rete: \UT_SRV\PROGETTI	Revisione: 2.0	Nome Parte: RDS CODER - DIGITAL		
File/Cartella: MANUAL\TRDS4001\SLMAINRDSNEW\ds9_01.dsn	Autorizzazione:	Codice: SLMAINRDSNEW		





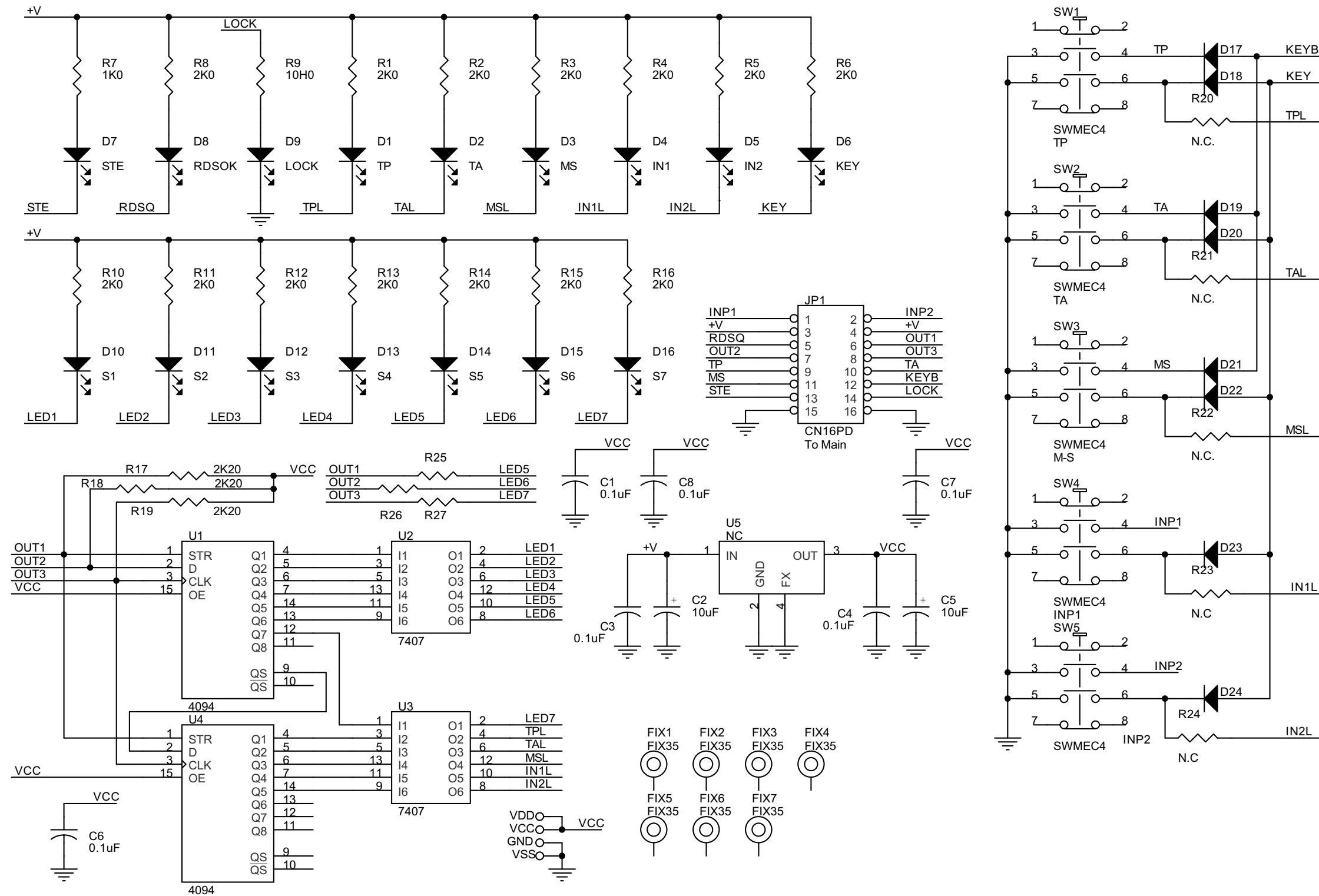
Nome Progetto: TRDS4001		Pagina: 1 di 1		Size: A3	
Autore: Ufficio Tecnico		Data: 15/07/03		Codice Progetto: TRDS4001	
Nome PC in Rete: \\UT_SRV\PROGETTI		Revisione: 2.0		Nome Parte: RDS CODER LAYOUT	
File/Cartella: Manual\TRDS4001\SLMAINRDSNEW\LAY_RDSCoder.dwg		Autorizzazione:		Codice: SLMAINRDSNEW	
Scala: /	Materiale: /	Trattamento: /	Profilo: /		



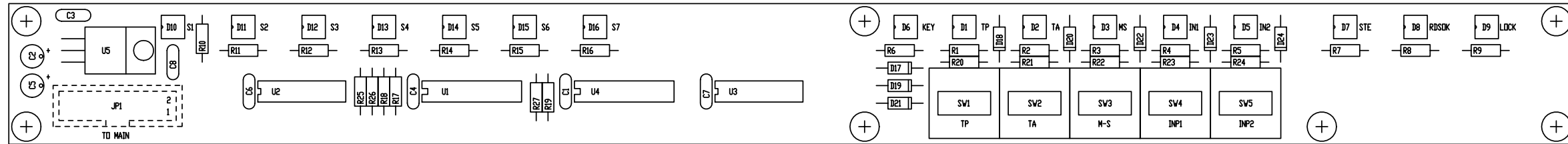
## RDS Coder - Bill Of Materials

Item	Qty	Reference	Part					
					31	8	D10, D12	
							D13, D14, D15, D16, D17, D18,	Z5V1
							D19, D20	
					32	1	D23	Z12V
					33	1	D24	Z5V6
					34	8	FIX1, FIX2, FIX3, FIX4, FIX5,	FIX35
							FIX6, FIX7, FIX8	
1	2	CN1, CN10	DB9FSO		35	1	JP1	CN10PD
2	5	CN3, CN4, CN5, CN6, CN7	BNC IS90		36	1	JP2	CN16PD
3	1	CN8	CN04MR		37	4	JP3, JP7, JP8, JP11	STM03S
4	1	CN9	XLRFC5		38	3	JP4, JP12, JP13	STM02S
5	1	CN11	DB25FSO		39	2	JP5, JP9	STF10S
6	1	C1	120pF		40	1	JP6	STM06D
7	3	C2, C3, C154	10pF		41	1	JP10	STM04S
8	17	C4, C5, C6, C7, C8, C23, C35,	10uF		42	1	JP14	STM16D
		C43, C46, C56, C83, C104,			43	1	J1	JSMDC
		C105, C106, C107, C122, C123			44	6	J2, J3, J4, J5, J6, J7	JSMD
9	1	C9	68pF		45	7	L1, L2, L3, L4, L5, L6, L7	2u2
10	1	C10	30pF		46	1	PD1	2W10
11	46	C11, C13, C14, C15, C16, C17,	0.1uF		47	1	Q1	BC547
		C18, C19, C22, C24, C25, C27,			48	2	RAFF1, RAFF2	RAF220
		C28, C29, C36, C39, C40, C41,			49	4	RR1, RR2, RR3, RR4	4K7
		C42, C44, C45, C50, C51, C55,			50	2	RV1, RV2	5K
		C70, C72, C75, C77, C80, C88,			51	1	RV4	20K
		C89, C101, C102, C103, C108,			52	1	RV5	1K
		C110, C116, C117, C118, C120,			53	1	RV6	100K
		C121, C145, C146, C151, C152,			54	1	RV7	10K
		C153			55	3	RY2, RY3, RY4	RLYTQ2_12
12	1	C12	47uF		56	15	R1, R33, R34, R52, R53, R57,	1K0
13	4	C20, C33, C47, C49	10nF				R58, R101, R102, R103, R104,	
14	48	RY1, X3, RV3, D8, R11, D11,	NC				R105, R106, R107, R108	
		U21, D21, C21, D22, D25, U26,			57	1	R2	47
		U27, R42, R43, R46, R47, R48,			58	1	R3	33K0
		R49, R50, C52, C53, C54, R56,			59	5	R4, R13, R14, R16, R111	22K0
		C57, C58, C62, C63, C64, C65,			60	2	R5, R119	470H0
		R66, C66, R67, R68, R73, C78,			61	2	R38, R6	47K0
		C79, C81, C82, R121, R123,			62	6	R7, R32, R59, R60, R82, R89	100H0
		R124, R125, R127, R128, R133,			63	4	R8, R91, R96, R97	2M20
		C147, C148			64	3	R9, R61, R62	330H0
15	3	C26, C59, C140	1uF		65	2	R10, R93	22K1
16	13	C30, C31, C37, C38, C61, C71,	1n5		66	3	R15, R64, R113	120K0
		C73, C74, C76, C142, C143,			67	1	R17	6K80
		C156, C157			68	2	R18, R118	47H0
17	17	C32, C124, C125, C126, C127,	1nF		69	3	R19, R27, R55	2K20
		C128, C129, C130, C131, C132,			70	2	R20, R22	18K0
		C133, C134, C135, C136, C137,			71	20	R21, R23, R25, R28, R29, R40,	10K0
		C138, C139					R41, R44, R72, R74, R81, R83,	
18	1	C34	5n6				R85, R86, R94, R114, R115,	
19	4	C48, C67, C68, C69	47nF				R130, R131, R132	
20	1	C60	33nF		72	1	R24	14K7
21	14	C84, C85, C90, C91, C92, C93,	27pF		73	3	R26, R30, R92	100K0
		C94, C95, C96, C97, C98, C99,			74	2	R31, R35	3K9
		C112, C113			75	1	R36	20K0
22	1	C86	2n2		76	2	R37, R39	80K6
23	2	C144, C87	100pF		77	4	R45, R120, R126, R129	0
24	2	C100, C119	22uF		78	1	R51	4K75
25	4	C109, C114, C115, C155	470nF		79	1	R54	6K8
26	1	C111	1n0		80	3	R63, R65, R112	232H0
27	1	C141	150nF		81	1	R69	681
28	2	C149, C150	1000uF		82	1	R70	7K50
29	1	C158	47pF					
30	10	D1, D2, D3, D4, D5, D6, D7, D9,	1N4148					

83	1	R71	6K98
84	2	R75, R79	51H0
85	3	R76, R80, R95	2K49
86	1	R77	604H0
87	1	R78	47H5
88	1	R84	4K99
89	2	R87, R90	1K33
90	1	R88	316K0
91	1	R98	22H0
92	1	R100	10H0
93	1	R109	390H0
94	2	R110, R122	1M0
95	2	R116, R117	S24V
96	1	R134	15K0
97	1	SW1	SWDIP4H
98	2	SW2, SW3	SWDIP2H
99	9	TP1, TP2, TP3, TP4, TP5, TP6, TP7, TP8, TP9	TP1
100	1	U1	80C552
101	1	U2	74HC573
102	1	U3	27C512
103	1	U4	M48Z35
104	1	U5	BQ3287
105	2	U6, U36	74HC04
106	1	U7	MAX232
107	1	U8	74HC4060
108	1	U9	74HC02
109	1	U10	74HC163
110	1	U11	74HC4046
111	1	U12	22V10
112	1	U13	74HC74
113	1	U14	MB3773
114	2	U16, U15	7407
115	1	U17	NE567
116	5	U18, U22, U23, U24, U35	TL072
117	1	U19	1496
118	1	U20	4053
119	1	U25	LM311
120	2	U29, U28	TL074
121	1	U30	7808
122	1	U31	7805
123	1	U33	7908
124	1	U34	74HC541
125	1	U37	ULN2804
126	1	X1	14M7
127	1	X2	4M864



Nome Progetto: TRDS4001		Pagina: 1 di 1		Size: A4
Autore: Ufficio Tecnico	Data: 15/07/03	Codice Progetto: TRDS4001		
Nome PC in Rete: \\UT_SRV\PROGETTI	Revisione: 2.0	Nome Parte: RDS PANEL		
File/Cartella: MANUAL\TRDS4001\SLPANRDSNEW\RDSPAN.DSN	Autorizzazione:	Codice: SLPANRDSNEW		

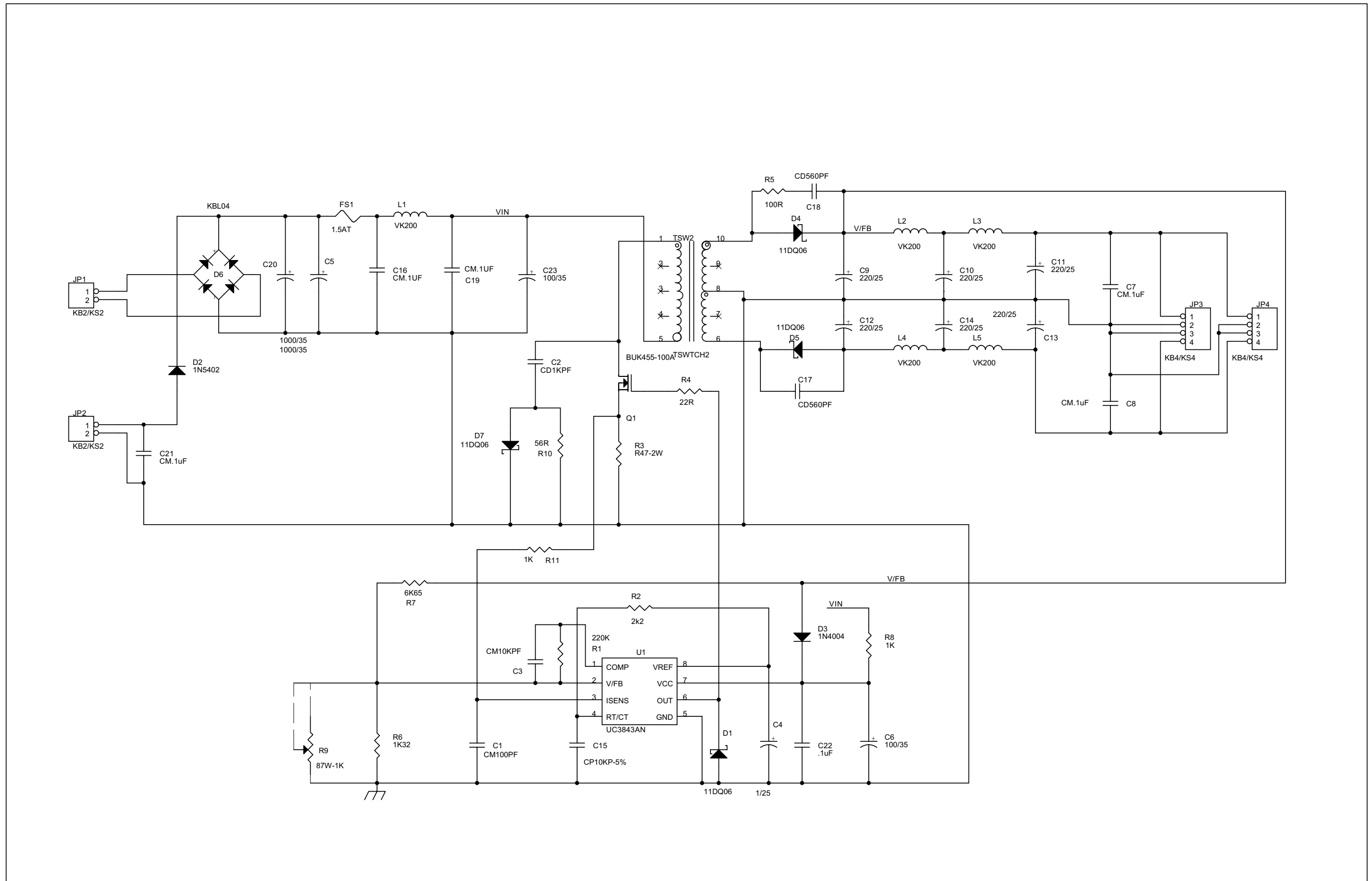


Nome Progetto: TRDS4001		Pagina: 1 di 1	Size: A3
Autore: Ufficio Tecnico		Data: 15/07/03	Codice Progetto: TRDS4001
Nome PC in Rete: \\UT_SRV\PROGETTI		Revisione: 2.0	Nome Parte: PANEL BOARD LAYOUT
File/Cartella: \MANUALI\TRDS4001\SLPANRDSNEW\csrdspan9902.dwg		Autorizzazione:	Codice: SLPANRDSNEW
Scala: 1:1	Materiale: /	Trattamento: /	Profilo: /

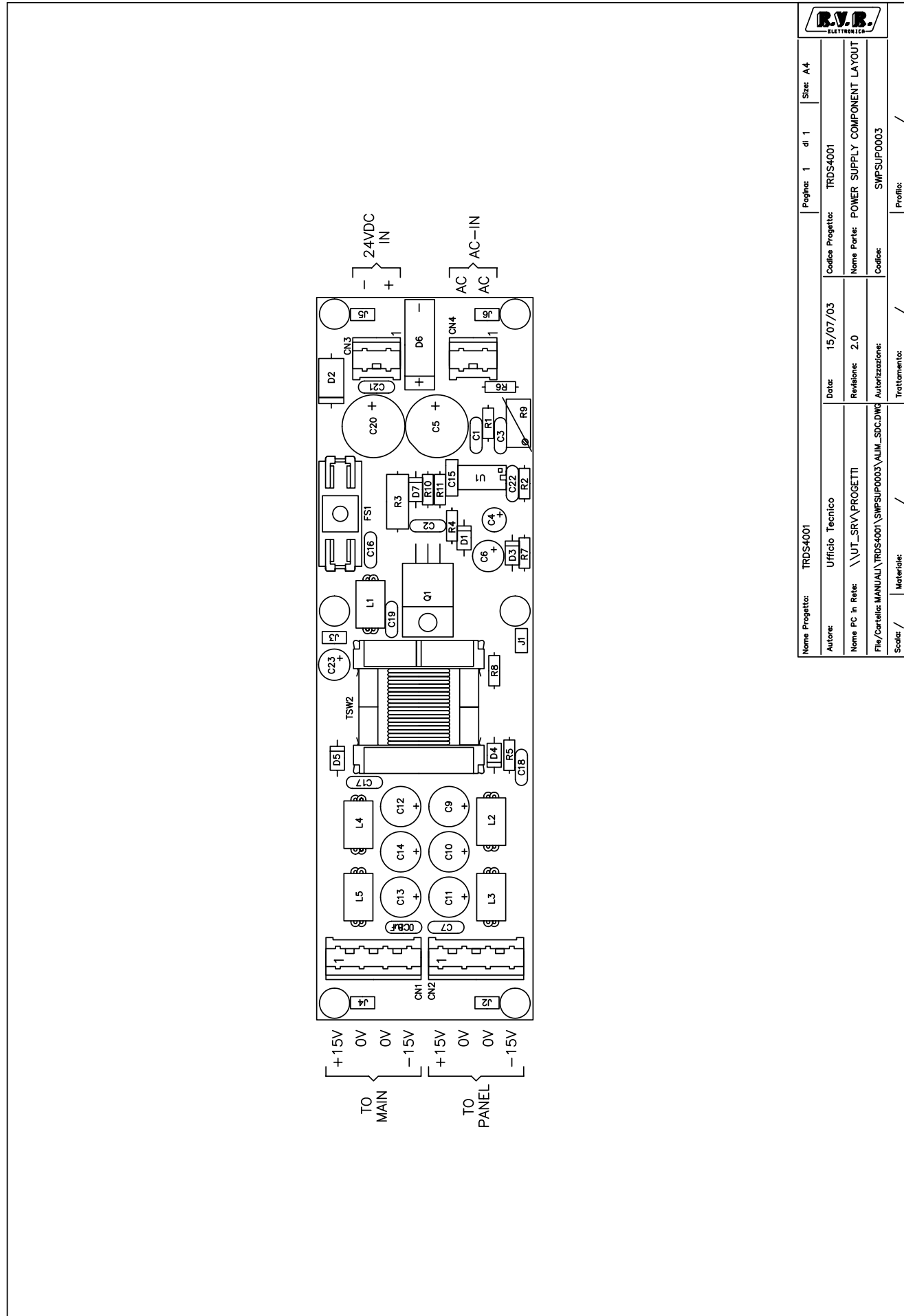


## RDS Panel Bill Of Materials

Item	Q.ty	Reference	Part
1	6	C1, C3, C4, C6, C7, C8	0.1uF
2	2	C2, C5	10uF
3	16	D1, D2, D3, D4, D5, D6, D7, D8, D9, D10, D11, D12, D13, D14, D15, D16	LED-G5
4	8	D17, D18, D19, D20, D21, D22, D23, D24	1N4148
5	7	FIX1, FIX2, FIX3, FIX4, FIX5, FIX6, FIX7	FIX35
6	1	JP1	CN16PD
7	14	R1, R2, R3, R4, R5, R6, R8, R10, R11, R12, R13, R14, R15, R16	2K0
8	1	R7	1K0
9	1	R9	10H0
10	3	R17, R18, R19	2K20
11	3	R20, R21, R22	N.C.
12	2	R23, R24	N.C
13	4	U5, R25, R26, R27	NC
14	5	SW1, SW2, SW3, SW4, SW5	SWMEC4
15	2	U1, U4	4094
16	2	U2, U3	7407



Nome Progetto: TRDS4001		Pagina: 1 di 1	Size: A3
Autore: Ufficio Tecnico	Data: 15/07/03	Codice Progetto: TRDS4001	
Nome PC in Rete: \\UT_SRV\PROGETTI	Revisione: 2.0	Nome Parte: POWER SUPPLY	
File/Cartella: Manuali\TRDS4001\SWPSUP0003\SDC100.dsn	Autorizzazione:	Codice: SWPSUP0003	



Nome Progetto:	TRDS4001	Pagina:	1	di	1	Size:	A4
Autore:	Ufficio Tecnico	Data:	15/07/03	Codice Progetto:	TRDS4001		
Nome PC in Rete:	\\UT_SRV\PROGETTI	Revisione:	2.0	Nome Parte:	POWER SUPPLY COMPONENT LAYOUT		
File/Cartella:	MANUALI\TRDS4001\SWPSUP0003\ALIM_SPC.DWG	Autore:		Codice:	SWPSUP0003		
Scala:	/	Materiale:	/	Trattamento:	/		

POWER SUPPLY - Bill Of Materials

Item	Quantity	Reference	Part
1	1	C1	CM100PF
2	1	C2	CD1KPF
3	1	C3	CM10KPF
4	1	C4	1/25
5	2	C5,C20	1000/35
6	2	C6,C23	100/35
7	5	C7,C8,C16,C19,C21	CM.1uF
8	6	C9,C10,C11,C12,C13,C14	220/25
9	1	C15	CP10KP-5%
10	2	C17,C18	CD560PF
11	1	C22	.1uF
12	4	D1,D4,D5,D7	11DQ06
13	1	D2	1N5402
14	1	D3	1N4004
15	1	D6	KBL04
16	1	FS1	1.5AT
17	2	JP1,JP2	KB2/KS2
18	2	JP3,JP4	KB4/KS4
19	5	L1,L2,L3,L4,L5	VK200
20	1	Q1	BUK455-100A
21	1	R1	220K
22	2	R2,R8	2k2
23	1	R3	R47-2W
24	1	R4	22R
25	1	R5	100R
26	1	R6	1K32
27	1	R7	6K65
28	1	R9	87W-1K
29	1	R10	56R
30	1	R11	1K
31	1	TSW2	TSWTCH2
32	1	U1	UC3843AN